

REPLICA



Newsletter of the National Association of Scale Aeromodelers

SEP/OCT 2013

NASA Airplane Raffle



To raise funds to help with the expense of the Scale Nats operations, allow us to introduce the next NASA raffle airplane - a Robart P-47 D ARF.

Here's just a few of the features of this outstanding model, valued at over \$3,000:

"Gabby" Gabreski P-47 ARF color scheme

Wing Span: 92 inches

Length: 79 inches

Wing Area: 1500 square inches

Weight: 35 - 38 pounds

Engine: Desert Aircraft DA-85

Futaba Radio system

Radical R/C A-123 dual receiver as well as retract batteries

Down & Locked remote kill switch, regulator for the engine ignition, and retract control box that will operate the gear doors also.

Du-Bro hardware and fuel system

All Composite Construction

Plug-in Wings

Removable Control Surfaces

Scale Details include:

Panel Lines

Flush Rivets

Internal Control Horns

Removable Firewall and Canopy

Machined Aluminum Wheels with scale tires

Tru-Turn scale prop hub

WarbirdPilots scale pilot figure

Robart Electric Retracts & Tailwheel installed

Nick Zirolli Design

Engineered by Dennis Crooks

Built by Dick Petit

Click here to buy your raffle tickets online!

Once again, Dick Petit is donating his time and skill to assemble the airplane for us. Dick is also instrumental in getting several other companies to donate items needed to complete the process. When finished, the aircraft will be ready to fly and the will have been test run and adjusted. The aircraft is eligible to enter in fun scale competitions with the appropriate photo and any giant scale fun-flies (IMAA).

Tickets are \$5.00 each, 3 for \$10.00 or 7 for \$20.00 and can be purchased through the NASA website using

Renew your NASA membership!

Click here to renew your NASA membership online.

PayPal. We can also send any number of tickets to those willing to sell them. The drawing will be held Saturday night at the Scale Banquet at the 2014 Scale.

Please everyone, help sell tickets and support NASA in our quest to make the Scale Nats better than ever.

The photos here are from Robart's site. To see the raffle P-47's progress, visit NASA's Flickr site by clicking here.



NASA OFFICERS

PRESIDENT

MIKE BARBEE

3903 Whispering Creek Lane
Delaware, Ohio 43015
740-362-5504
mabarbee@aol.com

VICE PRESIDENT

PAUL CAIN

1906 Center Street
New Albany, Indiana 47150
812-945-3103
c103iflyrc@att.net

SECRETARY/TREASURER

BOB LIRETTE

W162 N9440 Blackfoot Drive
Menomonee Falls, Wisconsin 53051
262-251-0804
robertlirette@ymail.com

**REPLICA EDITOR/
NASA WEBMASTER**

MARK LANTERMAN

7414 Burton Drive
Liberty Township, Ohio 45044
513-755-7494
mark@airbornemedia.com

Asking for 2014 NASA Board Nominations

We are still in the process of accepting nominations for the upcoming 2014 election. These NASA board positions are a 2-year term and the current nominees are:

President: Mike Barbee (incumbent)
Ted Kraver

Vice President: John Boyko
Dale Arvin
Charlie Bauer

Secretary/Treasurer: Tina Patton

We invite anyone interested in running for a board position to let us know by the end of November. Only nominations of current NASA members in good standing will be considered by the Nominating Committee.

Each of the nominees must also submit a biography of 200+ words. This biography will be posted to the NASA website for all NASA members to see and consider when casting their votes in December.

To submit a nomination, please email your contact information and biography information to the Nominations Committee Chairman, Ed Terry - cptforensics@gmail.com

All nominations must be received by October 31st.

If you have any questions regarding the election process, or what the duties of these offices entail, please visit the NASA website to read through the NASA bylaws - <http://www.nasascale.org/nasabylaws.htm>

President's Notes

Hello scale modelers, interested scale builders and pilots. It has been a good year for scale competition as I see it.

One of our premier contests, the Mint Julep, celebrated its forty year anniversary. This year the contest was held at a new venue, The Ohio River View Fliers field and again the loyal following was there to participate and fly at one of if not the best. R/C fields in the Midwest.

The Scale National Championships at the AMA site in Muncie was well attended and highlighted by perfect weather. This gathering of scale modelers and pilots has a long running time I believe in the neighborhood of 85 years. Wow something started before I was born! This year we enjoyed the company of the control-line scale pilots and their families. Our very well planned banquet and auction was one of the highlights. Shannon Ort and her volunteers did a fantastic job with the planning and prize solicitation.

How about the new contest, the first annual Columbus Scale Classic was very well attended. I was very pleased with the participation especially the beginner scale class that was made up of club members who had never flown in any type of competition. The contest ran two days and we were blessed again with perfect weather. The contestant judging went very well - yes, I said contestant judging. This makes the event doable by any club. The static chores were done by two pros who also served as flying judges. There were no complaints and all forty three pilots gave a resounding "yes" when I asked if we should do it again in 2014. Save the date our 2014 contest will be held on August 16-17. Come to Ohio and fly with us, don't miss the Saturday evening hanger party, next year.

I have decided to run for NASA president this coming year. It is a two year term and if elected again I am determined to promote the local contests. This will help build our scale contingent. The local clubs that host scale competition may find a way to get the younger pilots involved in scale modeling.

Next time encourage a young pilot and help him or her enjoy the scale competition as you and I have over the years. Don't forget to vote.

MIKE BARBEE
mabarbee@aol.com

AERO-PAC SCALE DOCUMENTATION FOR THE DIGITAL AGE.



- Each Aero-Pac is devoted to a single airframe.
- The documentation comes on a cd-rom and is viewable in any modern Mac/Windows web browser.
- Includes walk-around, exterior & interior details, enhanced close-ups, and 3-views and more!

HOW DO THEY WORK?
CLICK HERE TO FIND OUT.

- All wording (n-numbers, nomenclature, etc.) are shot close-up and head-on for easier duplication.
- Compatible with Mac and Windows computer systems.

**CLICK HERE TO SEE ALL OF OUR AERO-PACS
ONLINE AT AIRBORNEMEDIA.COM**

All Aero-Pac's are \$15.95 using our digital download option.

(Also available for \$19.95 for a cd-rom version - Call for details.)



Call Toll Free: 888-829-4060
7414 Burton Drive, Liberty Twp, OH 45044

Editor's Notes

It's not often I throw my thoughts and opinions into the Replica, but there's a couple of subjects that I wanted to cover.

The first is to address one ongoing complaint that we as NASA board members have receive on a weekly basis. For some reason we are perceived as ignoring control-line and free-flight members, focusing only on the radio-control side of things.

Well, nothing could be further from the truth.

Having been on the board for a while, I can empathically state that we have been begging and pleading for both control-line and free-flight modelers to become more involved and even run for the board positions.

I'd also welcome any print-worthy articles, tips, and contest coverage that I could include in the Replica, the NASA website, and the NASA Flickr site. If you know of anyone please have them contact me directly either by email (mark@airbornemedia.com) or by phone - 513-755-7494.

Now with that out of the way, let's address the other topic which is far more fun - NASA's new Flickr account. If you haven't had a chance to see it for yourself, please click here to see it first hand - <http://www.flickr.com/photos/99965155@N02/photos/>

We shoot and receive hundreds of photos from each event and have created a Flickr account to share and archive all of them. With an amazing 1 terrabyte of storage space we can share tons of photos and videos (each up to 3 minutes in length).

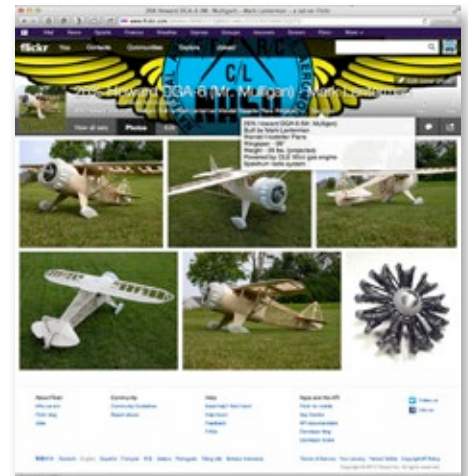
When you visit the site you will see all uploads are shown in reverse-chronological order, the most recently uploaded first. Each of the photos are also separated into events, that can be viewed when clicking on the SETS tab. Also included are NASA logos and the NASA artwork used on each of the shirts we've printed for past NATS.

We invite all NASA members to send me photos of their events, projects, fun-flies, etc. This will be a growing, ever-evolving place for all of us in the scale community. If it's scale, we want to share it! Free-Flight, Control-Line & R/C. For more information on the best way to share your scale photos/videos, shoot us an email.

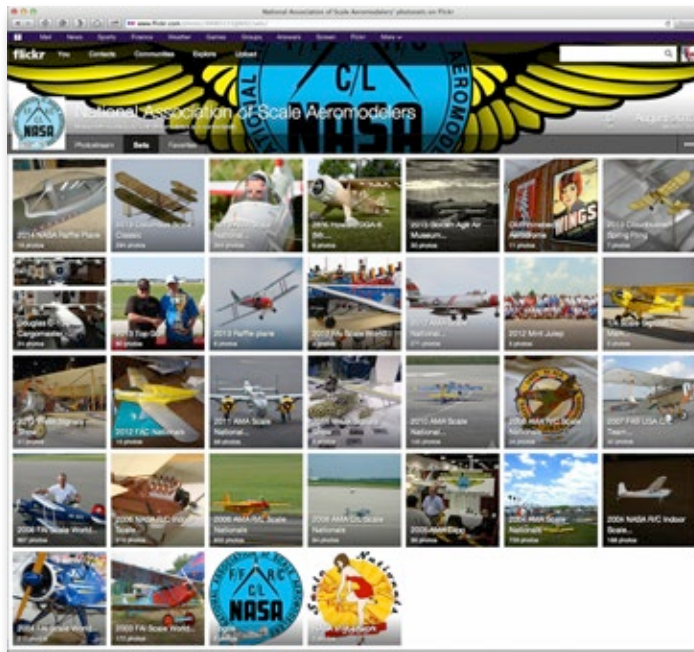
I've also been working on a way to post member's projects and I've used a couple of my own projects as examples. The best way I've found is to make a set for each project. Shown here

is an example of the 50cc Mr. Mulligan I'm currently working on, and the same one you'll see featured in my build article in the October Model Aviation.

Photos can be uploaded to them as a project is completed, so you have a "build history" of sorts. You'll also see a set devoted to this years Raffle model. I've been working with Dick Petit and uploading the



NASA's Flickr Site, showing a member project sample.

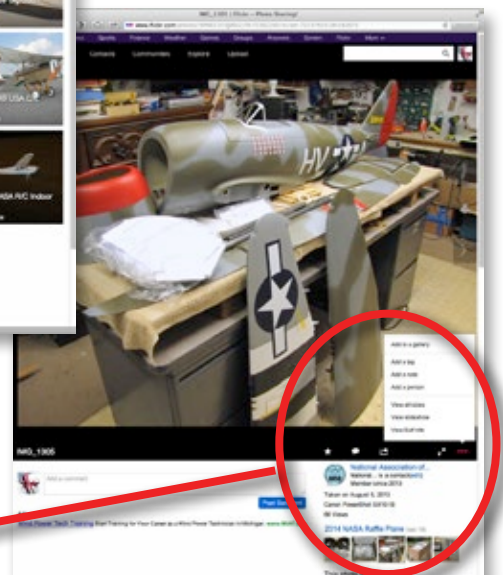


NASA's Flickr Site, this view showing all the individual sets online.

photos and movies of the build so you'll see exactly what you're buying tickets for.

To download any of photo: Click on the thumbnail of any photo and it will enlarge to fill the browser window.

Underneath the photo (in the black border area), look to the right



NASA's Flickr Site, showing a member project sample.

and you'll see a series of icons.

Click on the the dots (...) and a pop-up window will appear.

Select "View all sizes".

The window will refresh again and show a number of available sizes above the photo.

Right-click on any of those links and you can download/save the photo to your drive.

12 Inches to the Foot

NASA Elections. Those of us on the nominating committee need your input for nominations for President, Vice President, and Secretary/Treasurer for the upcoming cycle of 2014-2015. We want to see more control-line modelers take part in the running of NASA and try to make this a more well rounded organization. I personally would like to see us have more free-flight interest as well. If you've ever watched them, or participated in free-flight scale, those models are fascinating. This could include having a board member or Vice President for free-flight and/or control-line? Thoughts? How about some input!

It's been interesting looking at old modeling magazines and checking out the advertisers in these issues. Wow, some don't seem that old but they really are.

Take the September R/C Modeler issue from 1979. Dave Platt's daughter is on the cover with his new Bucker Jungmeister biplane. It is built to 1/4 scale and has a wingspan of 64 7/8" wow! In 1979 that was big for a biplane and it was scale.

Some of the advertisers who were around then (and you don't see now) are several major hobby shops as well as several companies: Logictrol International (radio systems), K&B Super Pox paint, Empire Models, Mutchler's Hobbies, Ace RC Inc, Royal, Bud Noson Models, World Engines, Brown's Hobby Center, Pica, Bob Reuther's Hobby World, The Hobby Market, Mark's Models, Standard Hobby Supply, Lanier, Kraft, Expert, Indy RC and I'm sure I've missed others.

There is a construction article on Dave's Bucker Jungmeister as well as the Rearwin Speedster designed by Joe Bridi at quarter scale. This Rearwin 1/4 scale model had a wingspan of 96 1/4" and was originally powered by a .60 with a reduction drive unit. Now a good DLE 20 would do nicely for this model. But the model is only a 4 channel airplane without flaps.

Oh well, that was before 2.4 radio systems, ARFs, and most

models coming from the other side of the globe. But it was fun going down memory lane a bit.

Our Nationals schedule for 2014 will once again have AMA members scrambling for hotel rooms as the Iron Man event will be back in Muncie. In talking to one of the AMA staff, who was trying to complete a list of motels that gives AMA members discounts for staying there, at least one Holiday Inn Express manager said " I don't have to give a discount to AMA, I can sell all the rooms I have for that weekend." Pretty cold, from a

city where before AMA arrived, Muncie had Ball State University and that was pretty much it. So I would suggest you make your reservations early. Next I'm expecting them to require a minimum stay of 5 days or something. While this hasn't happened in Muncie, it has happened

in other cities where an event or events regularly take all the motel rooms available for a limited time. This is what happened at Oshkosh, WI and the EAA Fly-In. Motels started requiring a 7 day stay and were charging five star prices for -0- star room. Oh well, last time there..... Maybe we need to collectively make our voices heard in Muncie?

That next project: Have that next project ready to work on during the winter? If not it's time to start thinking about it. I've assembled pretty much all the stuff for my latest project the Cessna C-165 Airmaster. High wing civilian aircraft with a great paint scheme especially for Halloween! Making sure you have all of the parts and bits for the model before you start is a good way to make sure you have success. Send in a photo

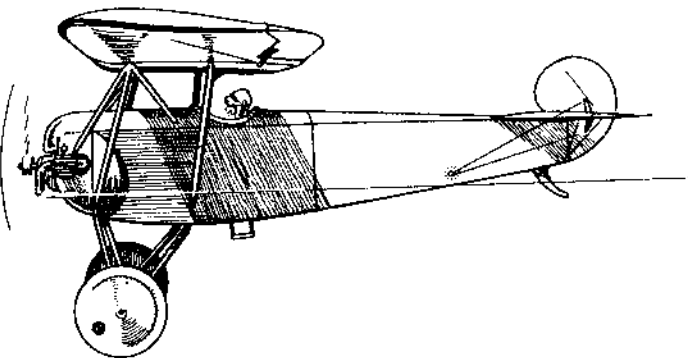
or two for NASA's Flickr link to Mark Lanterman for your new project, I'm sure everyone else would like to see it too. Then there is the P-40 waiting in the wings and a few others that have been put on the back burner so to speak. The enemy seems to be work and time...



Photos of a Rearwin Speedster from the AAA Fly-in in 2011.

Fair Skies & Tail Winds,
STAN ALEXANDER
onawing4602@att.net

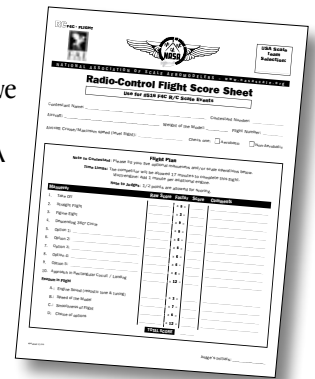
There ain't nothing so
useless as altitude above
you, runway behind you, or the
gas that's already gone



www.NasaScale.org

NASA NEWS AND INFORMATION ON THE INTERNET

If you have internet access, you owe it to yourself to visit NASA's web site - www.nasascale.org. The NASA site was designed from the start to be the only place you need to go to find out everything that's happening in the world of scale aeromodeling - whether it's here on the National front, or on the International front - the domain of the FAI.



COMPETITION DOCS/FORMS

This is one of the more exciting features of the web-site. We have all the competition forms and documents for scale competition online in pdf form. Not only are the documents up-to-date, but we now have two versions of each.

One is the regular pdf that we invite contest directors to download and printout for use in their contests.

The second (and more exciting) version of the form is the "intelligent" form. Using this version and an up-to-date version of Adobe's Acrobat Reader, you can fill out all your information using your computer, then pre-print copies to take to your next scale event: information about yourself, your plane and your maneuvers/options. All AMA rule book maneuvers/options (as spelled out in the current AMA rule book) can be selected from pull-down menus; right on the .pdf. Imagine not having to spend time at your next contest filling out forms!

SCALE AVIATOR™ INTERNATIONAL

The RC Scale Aviation Magazine in an Online Format

Visit the website and
Review the FREE
25 page sample
edition. See all
the features too.
Its Digital!



6 scale packed issues
per year

One Year Subscription

\$26.95 USD

PayPal - Credit Cards

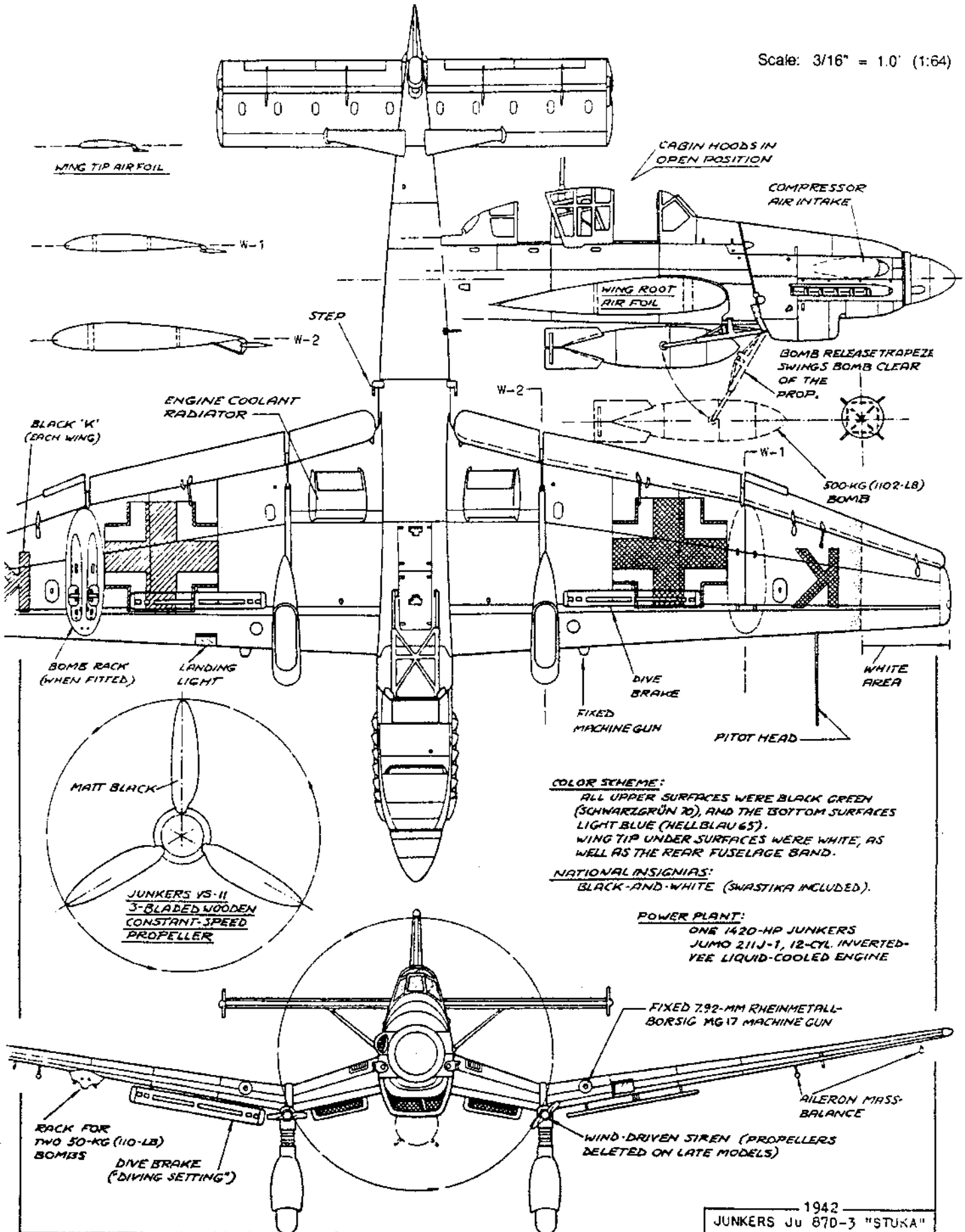
View on your PC or MAC with dynamic page turns, zoom, archive
to your files, email, print or save as a PDF on your desktop.

Auto Formats for iPad & Smart Phones. No iTunes App Required!

www.scaleaviatorint.com

Junkers JU-87D-3 Stuka 3-View

Scale: 3/16" = 1.0' (1:64)



COLOR SCHEME:

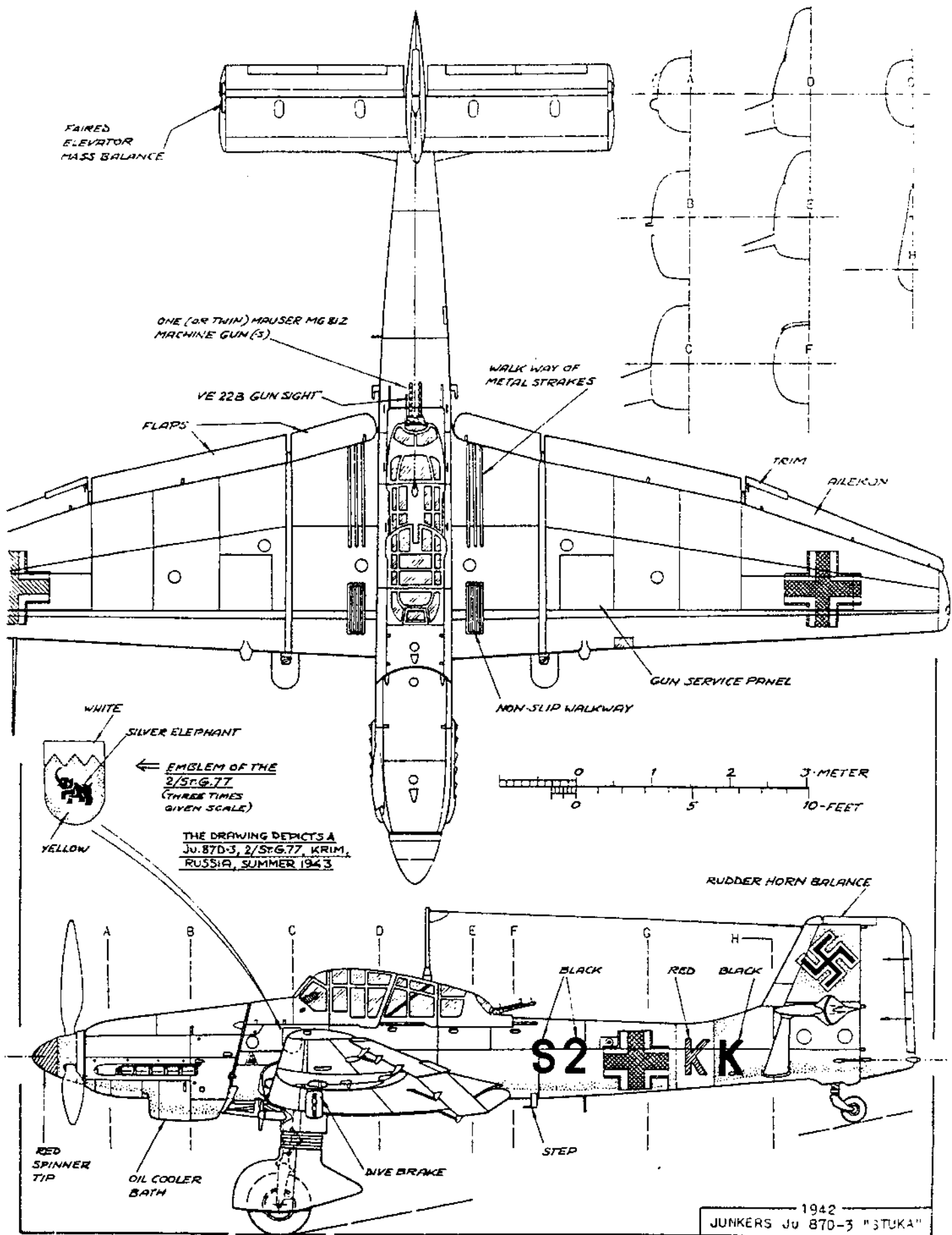
ALL UPPER SURFACES WERE BLACK GREEN (SCHWARZGRÜN 70), AND THE BOTTOM SURFACES LIGHT BLUE (HELLBLAU 65). WING TIP UNDER SURFACES WERE WHITE, AS WELL AS THE REAR FUSELAGE BAND.

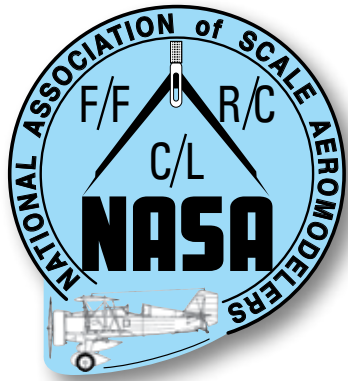
NATIONAL INSIGNIAS:

BLACK-AND-WHITE (SWASTIKA INCLUDED).

POWER PLANT:

ONE 1420-HP JUNKERS JUMO 211J-1, 12-CYL. INVERTED-VEE LIQUID-COOLED ENGINE





IN THIS ISSUE:

- **RENEW YOUR NASA MEMBERSHIP TODAY!**
- **THE LATEST IN SCALE NEWS! • JUNKERS JU-87D-3 STUKA 3-VIEW**

Join NASA Today! Complete the following application (please print) and mail it to
Bob Lirette, Secretary/Treasurer NASA, W162 N9440 Blackfoot Dr., Menomonee Falls, WI 53051

Membership dues are \$20.00 yearly (newsletters sent to foreign members sent by e-mail,
or \$25.00 foreign with newsletters set by post.)

Make checks or money orders payable to: **National Association of Scale Aeromodelers.**

Name: _____ New Renewal Address Change

Address: _____

City: _____ State: _____ Zip: _____ Country: _____

Tel: _____ - _____ - _____ E-mail: _____ AMA # _____ NASA # _____

Area of Interest: Free Flight Control Line Radio Control Giant Sailplane Electric

CHECK HERE if you do NOT want your name and address included in a directory to be distributed to NASA members. NASA will not sell this directory to anyone.

REPLICAS

REPLICA EDITOR

MARK LANTERMAN

7414 Burton Drive
Liberty Township, Ohio 45044